
A close-up photograph of two hands, one slightly larger than the other, cupping a single metal key. The hands are positioned as if presenting the key. The background is dark and out of focus. The entire image has a semi-transparent dark overlay.

Housing First 101

The “Meat and Potatoes”

Compliance and Fidelity





**History
of
Housing
First**



T or F

Is this man considered the
“Father of Housing First”?

ROOTS

- **Toronto 1970's Houselink.** Housing program for those being discharged from psychiatric facilities. Housing is a right and individuals have a right to participate in the operation and organization as partners. Housing without treatment requirements.
- **Los Angeles's 1980's Beyond Shelter.** Coined the term "housing first" for program for rapid re-housing homeless families by bypassing shelters and transitional housing and go directly into permanent housing.
- **New York City 1990's Pathways to Housing.**



What is Housing First?

“...a recovery oriented approach to homelessness that involved moving people who experience homelessness into independent and permanent housing as quickly as possible, with no preconditions, and then providing them with additional services and supports as needed(wanted)” (Gaetz, 2013).

Core Principles



MEAT & POTATOES

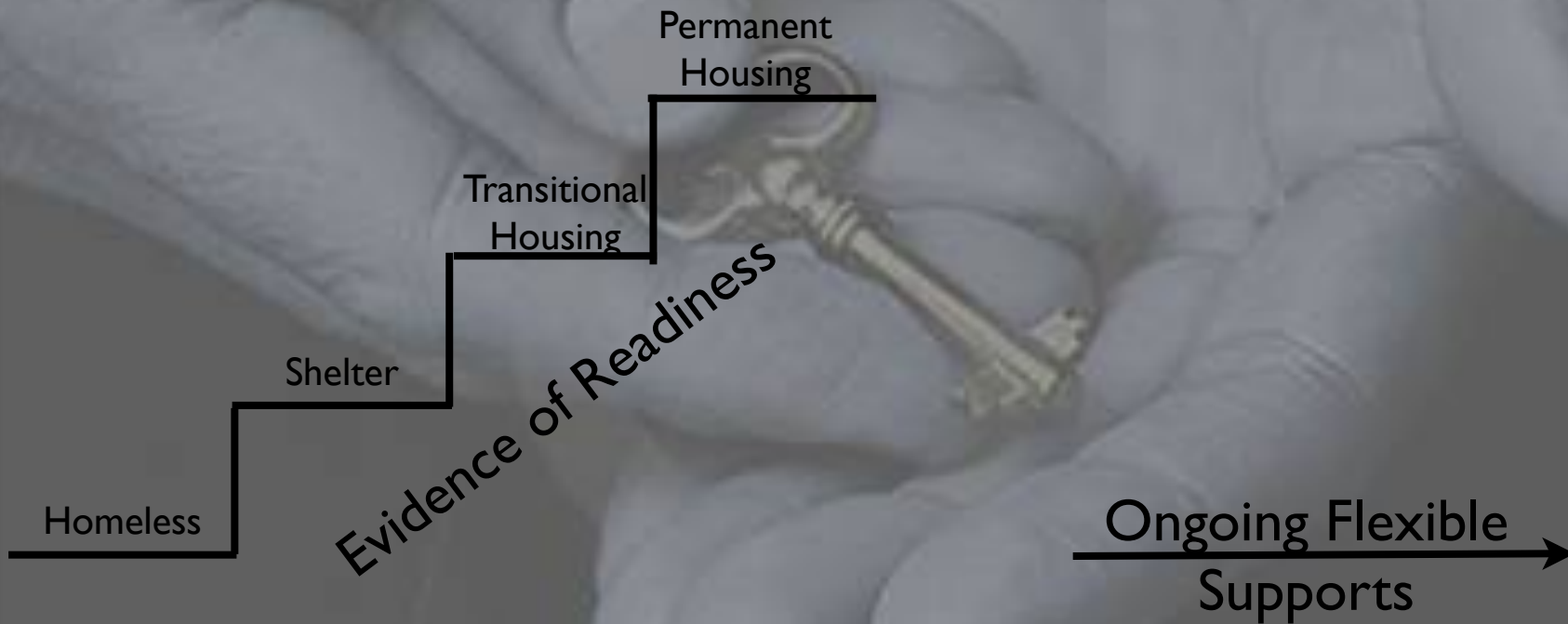
Housing is a Basic Human Right

- Immediate access to permanent housing
- Everyone is "housing ready"
- Housing is NOT conditional



Housing First vs Treatment First

Treatment First



Housing First vs Treatment First

Housing First

Homeless

Permanent
Housing

Ongoing Flexible
Supports →

Compliance Points

H1 Enterprise

- Referrals for service participants are accepted from all sectors of the community and all parts of the crisis response system frequented by vulnerable people experiencing homelessness.
- Service participants are not rejected for services based on poor, negative, non-existent, rental history, criminal convictions, or ANY behaviors that could indicate a lack of "housing readiness."
- Service participants are not rejected for services based on the existence of a source of income, poor credit or financial history.

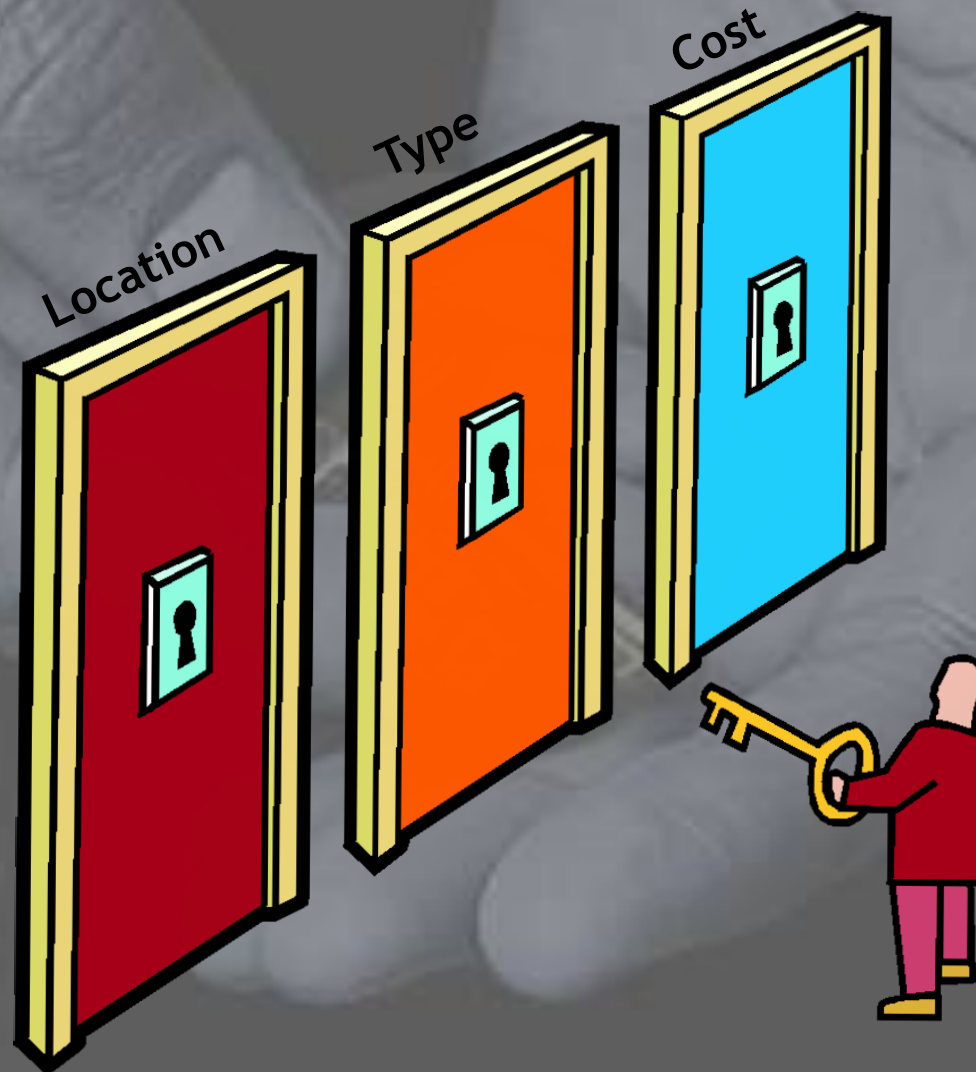
Compliance Points Community

- Partnering agencies make every effort to be sensitive to and message policy and practices to not prevent access to income or housing based on:
 - Level and type of vulnerabilities
 - Financial or credit history
 - Rental, criminal, or agency history
 - ANY behaviors that could indicate a lack do "housing readiness"
 - History of and/or current existence of employment or source of income.

**GAME
TIME**

The image features the words "GAME" and "TIME" stacked vertically in a bold, 3D, orange-gold font with black outlines. The text is set against a dark blue background filled with a digital pattern of glowing blue dots and lines, resembling a data stream or a virtual space. A bright blue light source in the upper center creates a lens flare effect, illuminating the scene.

Choice is Essential - Not Coercion





Services
&

S U P P O R T
S U P P O R T



Compliance Points

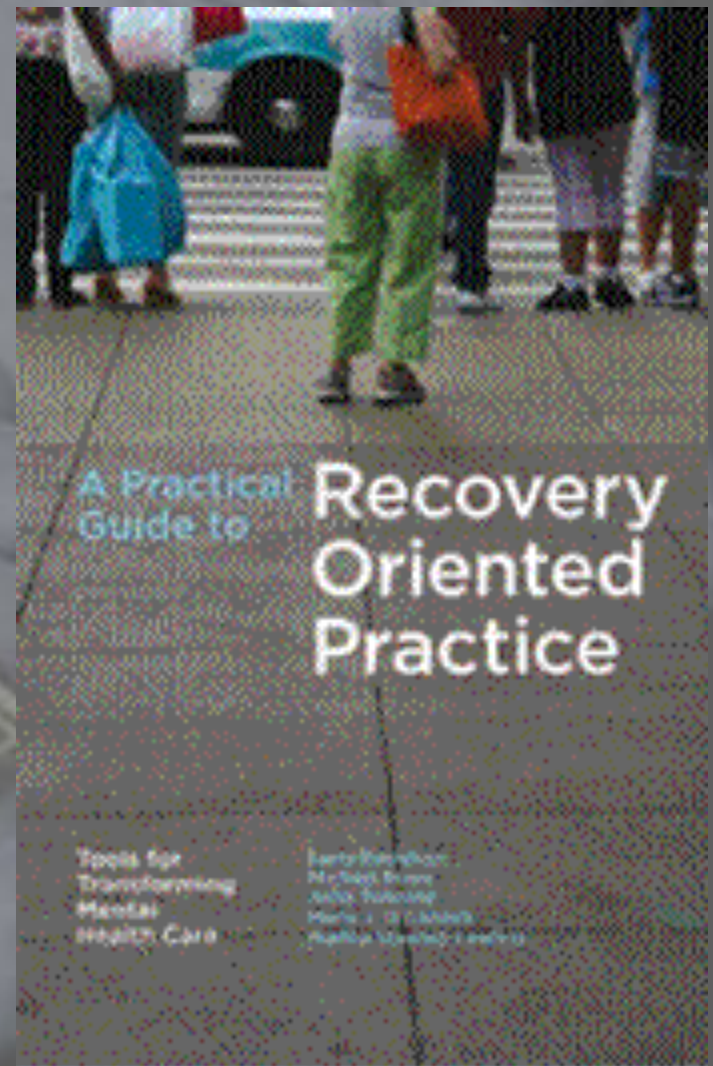
H1 Enterprise

- Admission and services promote acceptance of participants without expectations of completion of or even participation in treatment or brokered or direct services offered.
- Participants are NOT expected to complete mandatory programming to access supports.
- Participants are not prevented from services and/or supports based on the disagreement or assessment of what appears to be an obviously poor choice in type and/or location of housing.
- The only barriers to a participant moving into the type and location of housing they choose should be based on landlord acceptance, availability, or affordability.
- Participants are not denied services nor do they have services withheld based on their desire to focus goals on things outside of assessment or worker identified needs or priorities.

Compliance Points Community

- Partnering agencies should not withhold financial or other kinds of support based on concerns regarding the type and location of housing chosen.
- Partners make every effort to not mandate their own service plans/goals and are sensitive to the participants choices.
- Partnering agencies make every effort to be sensitive to and message policy and practices to NOT prevent access to income or housing based on participant choice to NOT engage in or complete:
 - Treatment of any kind
 - Other mandated programming

- Meaningful daily activity
- Social integration and networks
- Harm reduction
- Cultural sensitivity
- Appropriate supports



Compliance Points

H1 Enterprise

- Admission and service delivery practices promote acceptance of applicants regardless of current or past sobriety or use of substances or other high risk behaviors.
- Participants are not required to maintain or even reduce substance use or other high risk behaviors to maintain supports and services.

Compliance Points Community

- Partnering agencies make every effort to be sensitive to and massage policy and practices to NOT prevent access to income or housing based on:
 - Current levels of substance use or sobriety or other high risk behaviors.

PHILOSOPHY

**SYSTEMS
APPROACH**

PROGRAM MODELS

TEAM INTERVENTIONS

**Assertive
Community
Treatment**

**Intensive
Case
Management**

**Rapid
Rehousing**



ASSERTIVE COMMUNITY TREATMENT

*the evidence-based
practice*



A grayscale photograph of two hands, one larger and one smaller, cupping a small, ornate key. The hands are positioned as if presenting the key. The text 'ICM' is overlaid in the center in a large, bold, black font.

ICM

Rapid Re-Housing



Housing First Participants

- Episodic and Chronic
- Complex needs
- High acuity
- Prioritize



Compliance Points

H1 Enterprise

- Intake and ongoing assessment of acuity and change is based on a common assessment tool.
- Acceptance into H1 and on an agency caseload is based on prioritization in relation to complexity as well as specific program mandates.
- Participants are not accepted into programs based on "first come first served."



NIMBY

ADDICTION

MENTAL HEALTH

NO INCOME

TRAUMA

PEER INFLUENCE





Reality of Change

The metaphor of a caterpillar transforming itself into a butterfly may be romantic but the experience is a highly unpleasant one for the caterpillar. In the process, it goes blind, its legs fall off and its body is torn apart to allow the beautiful wings to emerge.



Housing first ends homelessness.

It's that simple.